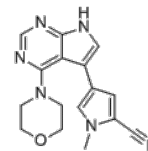


Product Name : PFE-360
Cat. No. : PC-62508
CAS No. : 1527475-61-1
Molecular Formula : C₁₆H₁₆N₆O
Molecular Weight : 308.345
Target : LRRK2
Solubility : 10 mM in DMSO



Biological Activity

PFE-360 (PF-06685360, PF360) is a potent, selective, brain-penetrating **LRRK2** inhibitor with IC₅₀ of 3 nM. PFE-360 induces a morphological kidney phenotype resembling that of the LRRK2 ko rats, whereas no effects in the lung. PFE-360 treatment induces morphological changes characterised by darkened kidneys and progressive accumulation of hyaline droplets in the renal proximal tubular epithelium, the estimated PFE-360 unbound plasma concentration off 10-fold the IC₅₀ (30 nM) to achieve full peripheral LRRK2 inhibition.

References

- Fuji RN, et al. *Sci Transl Med*. 2015 Feb 4;7(273):273ra15.
Andersen MA, et al. *Toxicology*. 2018 Feb 15;395:15-22.

Caution: Product has not been fully validated for medical applications. Lab Use Only!

E-mail: tech@probechem.com